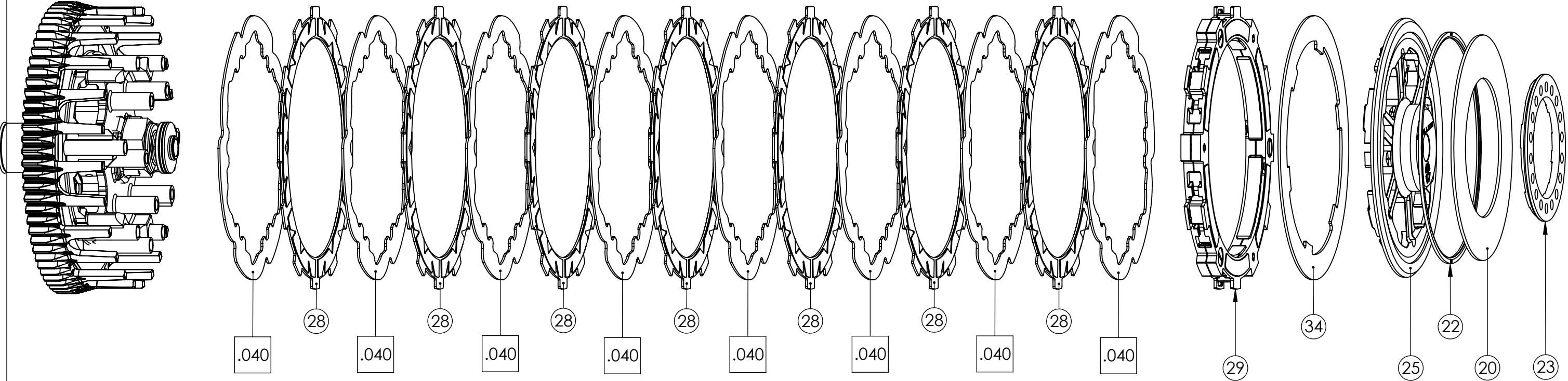


SETUP SHEET 198-7913181



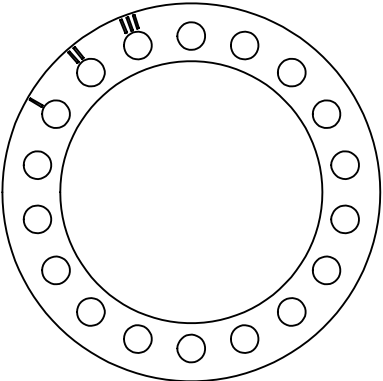
ITEM NO.	PART DESCRIPTION	QTY.
20	OEM SPRING	1
22	OEM SLIDER RING	1
23	OEM SPRING RING	1
25	REKLUSE PRESSURE PLATE	1
.040	.040" TEC-DRIVE PLATE	8
28	TORQDRIVE FRICTION	7
29	EXP DISK	1
34	LINING PLATE	1

The OEM spring ring has different settings to account for variances in the clutch pack and wear. The optimal setting depends on the thickness of the clutch pack.

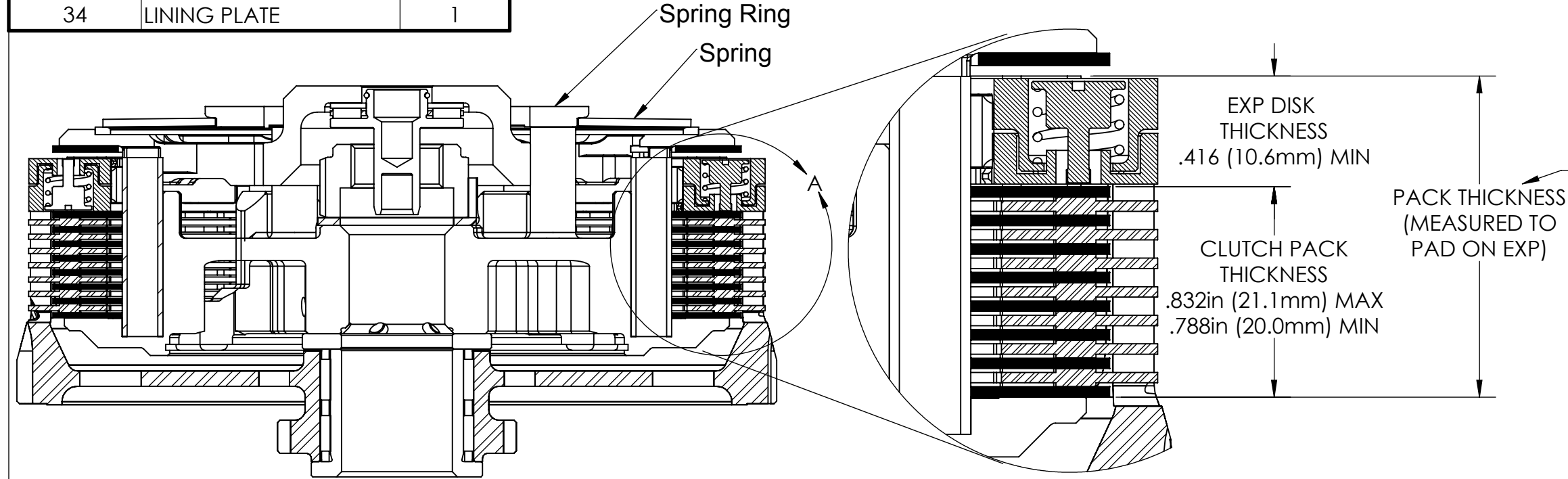
In general, MORE preload on the spring results in LESS clamping force, which in turn provides a lighter lever pull and less aggressive clutch performance.

LESS preload on the other hand provides MORE clamping force, a heavier clutch pull, and more aggressive clutch performance.

See the "Spring Ring Optimization Table" for recommended optimized setting based on clutch pack thickness.



Spring Ring



Spring Ring Optimization Table	
PACK THICKNESS [IN/mm]	SPRING RING SETTING
1.244-1.260 (31.6-31.8)	III OR Z
1.228-1.244 (31.2-31.6)	II OR Y
<1.228 (<31.2)	I OR X

